

Cyclone II (STR Cleat 2 Loop)

Features

- Third party certification to IEC 61914:2009
- 316L stainless steel base with stainless steel strap
- 24 - 145mm in 15 sizes for trefoil formation / application
- 36 - 118mm in 8 sizes for multicore cables or single core parallel formations
- 21 - 68mm in 8 sizes for quad formations
- Cyclone II short circuit rating of 151kA peak fault
- Operating temperature -50°C to +60°C
- Low Smoke & Fume (LSF) liners as standard
- Combined single (M12) and two bolt (M10) base fixing design



www.cmp-products.com

FI501 REV 1 02/17



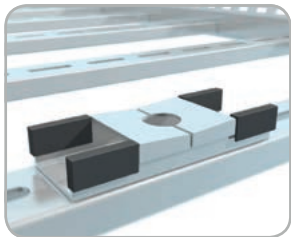
www.cmp-products.com

Cyclone II (STR Cleat 2 Loop)

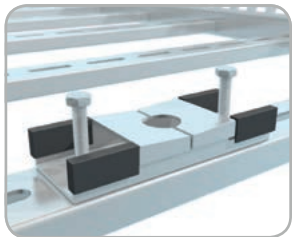


**Cleat Installation
Instructions**

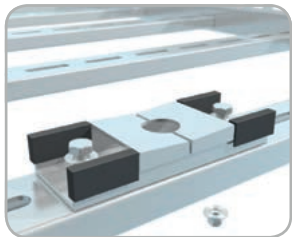
CMP Cleat Installation Instructions



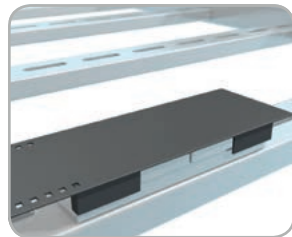
1 Place cleat base onto ladder in desired location along rung



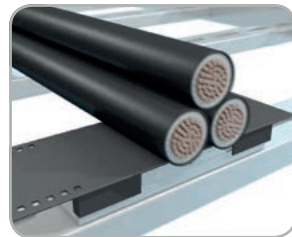
2 Place fitting(s) (1 x M10 or 2 x M10 - not supplied as standard), through the base and mounting surface



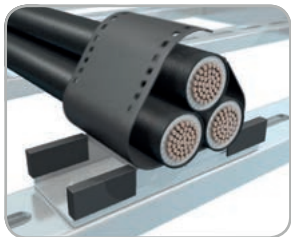
3 Tighten down to no more than 12N/m torque



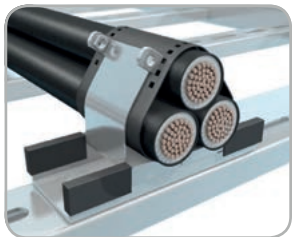
4 Place liner base on top



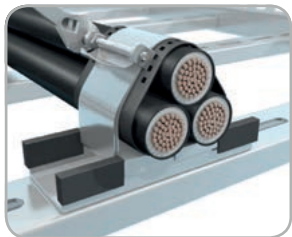
5 Place cables onto base / liner



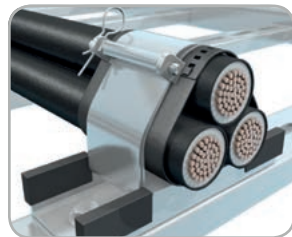
6 Wrap the liner around the cables and clip together



7 Place the strap through the base at the back, pull towards the front and loop two times around the cables



8 Turn the hex key to wind up until tight (resistance is felt when attempting to wind the key). Do not tighten any further as this will only damage the strap.



9 Align the holes of the winding key and retaining bush and put retaining pin through holes until it clips over bush, locking the winding key in place