

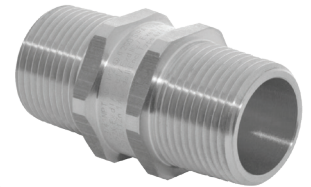
# 797

## 797 MALE - MALE OR FEMALE - FEMALE ADAPTOR, GLOBALLY APPROVED, EXPLOSIVE ATMOSPHERE CABLE / CONDUIT ACCESSORY

- Designed to convert existing threads
- General purpose / industrial version available
- Supplied with male or female threads
- Can be supplied with thread conversion
- Equipment interface o-ring seal available on male-male
- -60°C to +200°C
- Globally marked, cCSAus, IECEx, ATEX and UKEX
- Can be used with 737 (not Ex d direct entry applications)

Female - Female

Male - Male



+200°C  
↑  
-60°C

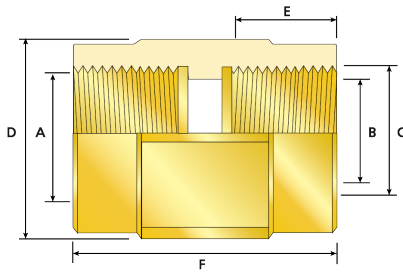
Ex db Ex eb Ex ta

### TECHNICAL CLASSIFICATION

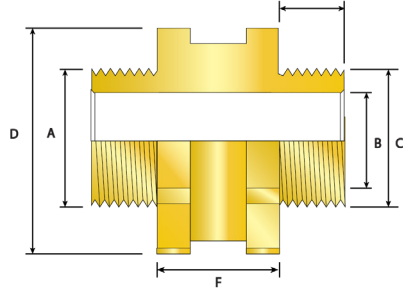
DESIGN SPECIFICATION	BS 6121:Part 1:1989
ENCLOSURE PROTECTION	IK10 to IEC 62262 (20 joules) Brass and Stainless Steel Only
INGRESS PROTECTION RATING**	IP66, IP67 and IP68***
AVAILABLE MATERIALS	Brass, Electroless Nickel Plated Brass, Aluminium, Stainless Steel

\*\* When CMP installation accessories are used. Refer to [www.cmp-products.com](http://www.cmp-products.com) for further information. \*\*\* IP68 tested to a minimum depth of 30 metres for 12 hours. alternative depths / durations can be provided upon request

Female - Female



Male - Male



### GLOBAL PRODUCT CERTIFICATION

ATEX CERTIFICATE	CML18ATEX1320X	IECEx CERTIFICATE	IECEx CML18.0177X, IECEx SIM 15.0002X
UKEX CERTIFICATE	CML21UKEX1238X	CODE OF PROTECTION	Ex db I Mb*, Ex eb I Mb*, Ex db IIC Gb, Ex ta IIC Da
CODE OF PROTECTION	II 2G 1D, Ex db IIC Gb, Ex eb IIC Gb, Ex ta IIC Da, I M2, Ex db I Mb*, Ex eb I Mb*	COMPLIANCE STANDARDS	IEC 60079-0,1,7,31
COMPLIANCE STANDARDS	EN 60079-0,1,7,31	COMPLIANCE STANDARDS	IEC 60079-0,1,7,31
cCSAus CERTIFICATE	1055233	CODE OF PROTECTION	Class I Div 1 and 2, Groups A, B, C and D; IP66, 67, and 68, Enclosure Type 4X; Class I, Zone 1, AEx de II; Ex de II
COMPLIANCE STANDARDS	Class I Div 1 and 2, Groups A, B, C and D; IP66, 67, and 68, Enclosure Type 4X; Class I, Zone 1, AEx de II; Ex de II	COMPLIANCE STANDARDS	C22.2 No. 0, 0.5, 30, 94; CAN/CSA 60079-0,1,7; UL 50, UL 1203; UL 60079-0,1,7
EAC CERTIFICATE	RU C-GB.A.07.B.02500/20	UKrSEPRO CERTIFICATE	CL 19.0372X
RETIE APPROVAL NUMBER	03866	CCOE/ PESO (INDIA) CERTIFICATE	P444949
CCC CERTIFICATE	2020322313003177	INMETRO APPROVAL	TUV 12.1332X
ECAS CERTIFICATE	20-02-05266	KCS KOSHA CERTIFICATE	14-GA4B0-0250X
SANS	IA MS-XPL21804 21.0006X		
MARINE APPROVALS	LRS: 01/00173, ABS: 17-LD1619350-PDA		

\*Aluminium alloys are not permitted in Group I mining applications.

### HOW TO ORDER

e.g. 797-D - M - 3 - F - M - 3 - F - 5

= Dual certified Ex d & Ex e - M25 (F) x M25 (F) - Nickel Plated Brass

Other thread variations are available on request. For further information on ordering please refer to page 163.

### PRODUCT SELECTION TABLE

TYPE	ORDERING REFERENCE	MALE/FEMALE FORWARD THREAD SIZE 'C'	MINIMUM THREAD LENGTH 'E'	MALE/FEMALE REAR THREAD 'A'	ACROSS FLATS 'D'	ACROSS CORNERS 'D'	BORE DIAMETER 'B'	PROTRUSION 'F'
Female	797DM1FM1F	M16 X 1.5	15.0	M16 X 1.5	24.0	26.4	10.0	34.0
	797DM2FM2F	M20 X 1.5	15.0	M20 X 1.5	24.0	25.9	14.0	36.0
	797DM3FM3F	M25 X 1.5	15.0	M25 X 1.5	30.5	33.6	16.0	36.6
	797DM4FM4F	M32 X 1.5	15.0	M32 X 1.5	37.6	41.4	27.7	37.0
	797DM5FM5F	M40 X 1.5	15.0	M40 X 1.5	50.0	54.0	33.0	37.6
	797DM6FM6F	M50 X 1.5	15.0	M50 X 1.5	60.0	66.0	45.5	40.6
	797DM7FM7F	M63 X 1.5	15.0	M63 X 1.5	70.0	77.0	57.5	40.6
	797DM8FM8F	M75 X 1.5	15.0	M75 X 1.5	80.0	88.0	68.2	37.0
	797DM9FM9F	M90 X 2.0	24.0	M90 X 2.0	100.0	110.0	84.7	50.0
	797DM10FM10F	M100 X 2.0	24.0	M100 X 2.0	108.0	118.8	91.0	52.0
Male	797DM1MM1M	M16 X 1.5	15.0	M16 X 1.5	24.0	26.4	10.0	18.9
	797DM2MM2M	M20 X 1.5	15.0	M20 X 1.5	24.0	26.4	14.0	18.9
	797DM3MM3M	M25 X 1.5	15.0	M25 X 1.5	30.5	33.6	20.0	18.9
	797DM4MM4M	M32 X 1.5	15.0	M32 X 1.5	36.0	39.6	26.5	20.9
	797DM5MM5M	M40 X 1.5	15.0	M40 X 1.5	46.0	50.6	32.2	20.9
	797DM6MM6M	M50 X 1.5	15.0	M50 X 1.5	55.0	60.5	44.1	20.9
	797DM7MM7M	M63 X 1.5	15.0	M63 X 1.5	70.0	77.0	55.6	20.9
	797DM8MM8M	M75 X 1.5	15.0	M75 X 1.5	80.0	88.0	65.6	20.9
	797DM9MM9M	M90 X 2.0	24.0	M90 X 2.0	100.0	110.0	82.0	26.9
	797DM10MM10M	M100 X 2.0	24.0	M100 X 2.0	108.0	118.8	90.8	28.9

All dimensions shown are in millimetres unless otherwise stated

Dimensions listed are for metric accessories only. Dimensions for alternative threads may vary.

[www.cmp-products.com](http://www.cmp-products.com)

TDS590 REV14 09/21